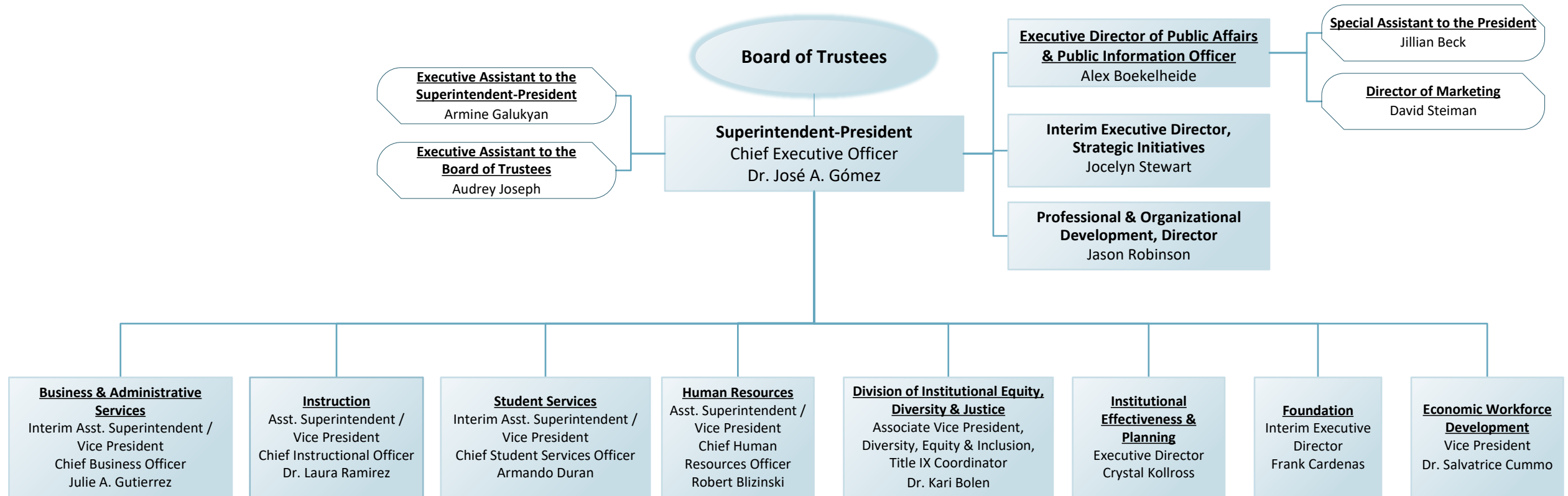
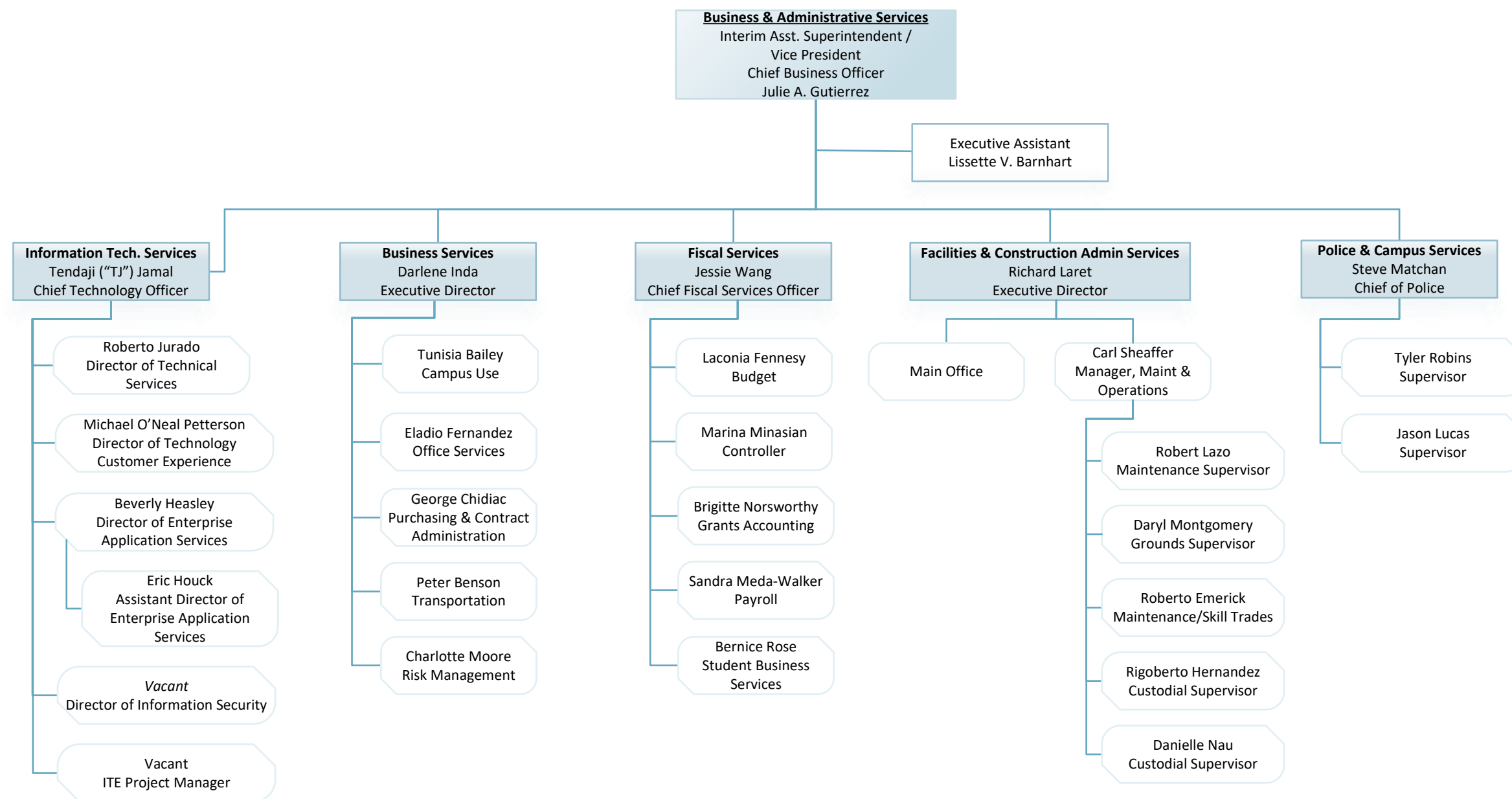


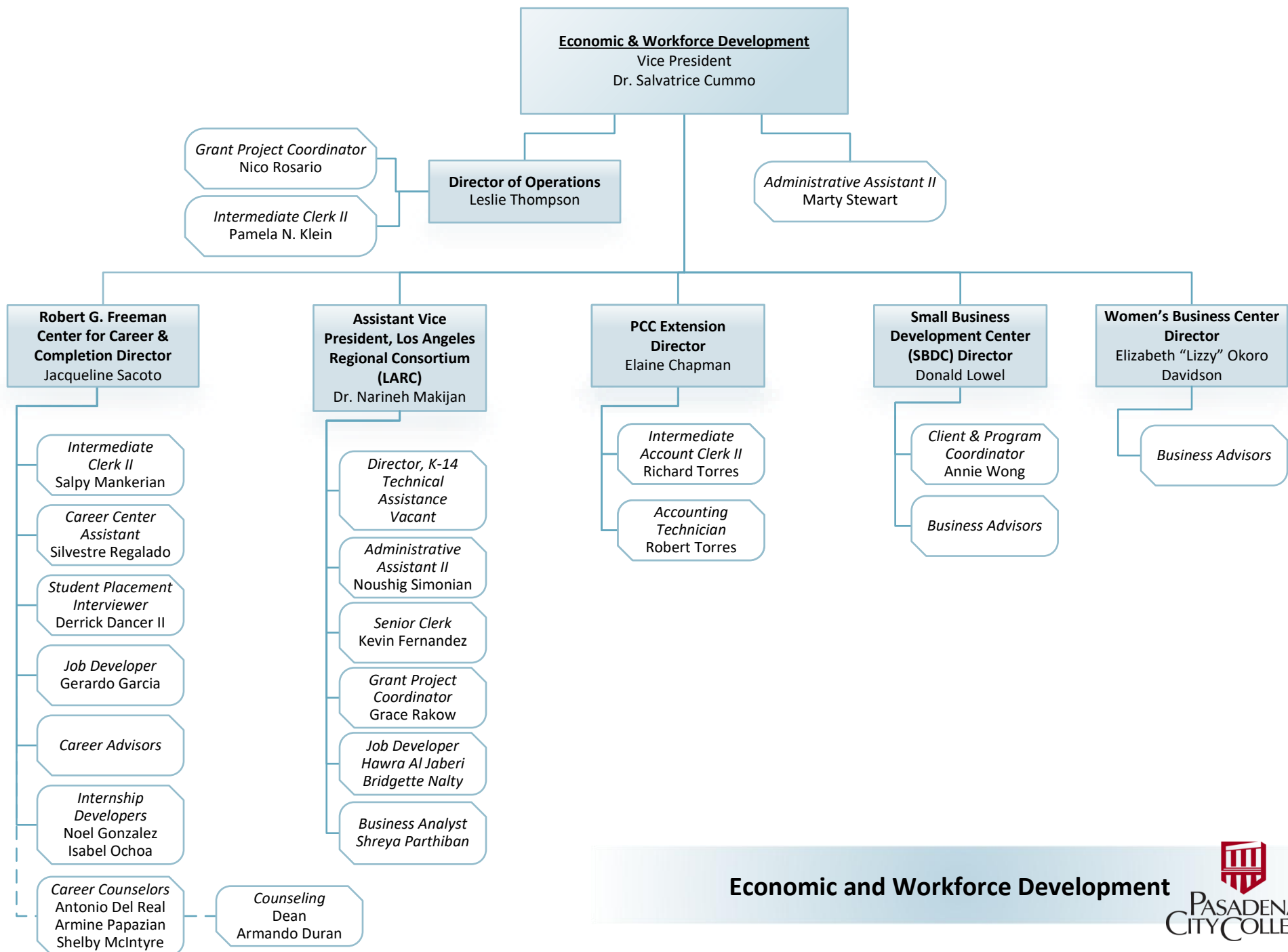
**District Administrative Staffing
and Functional Chart**

Effective May 2025

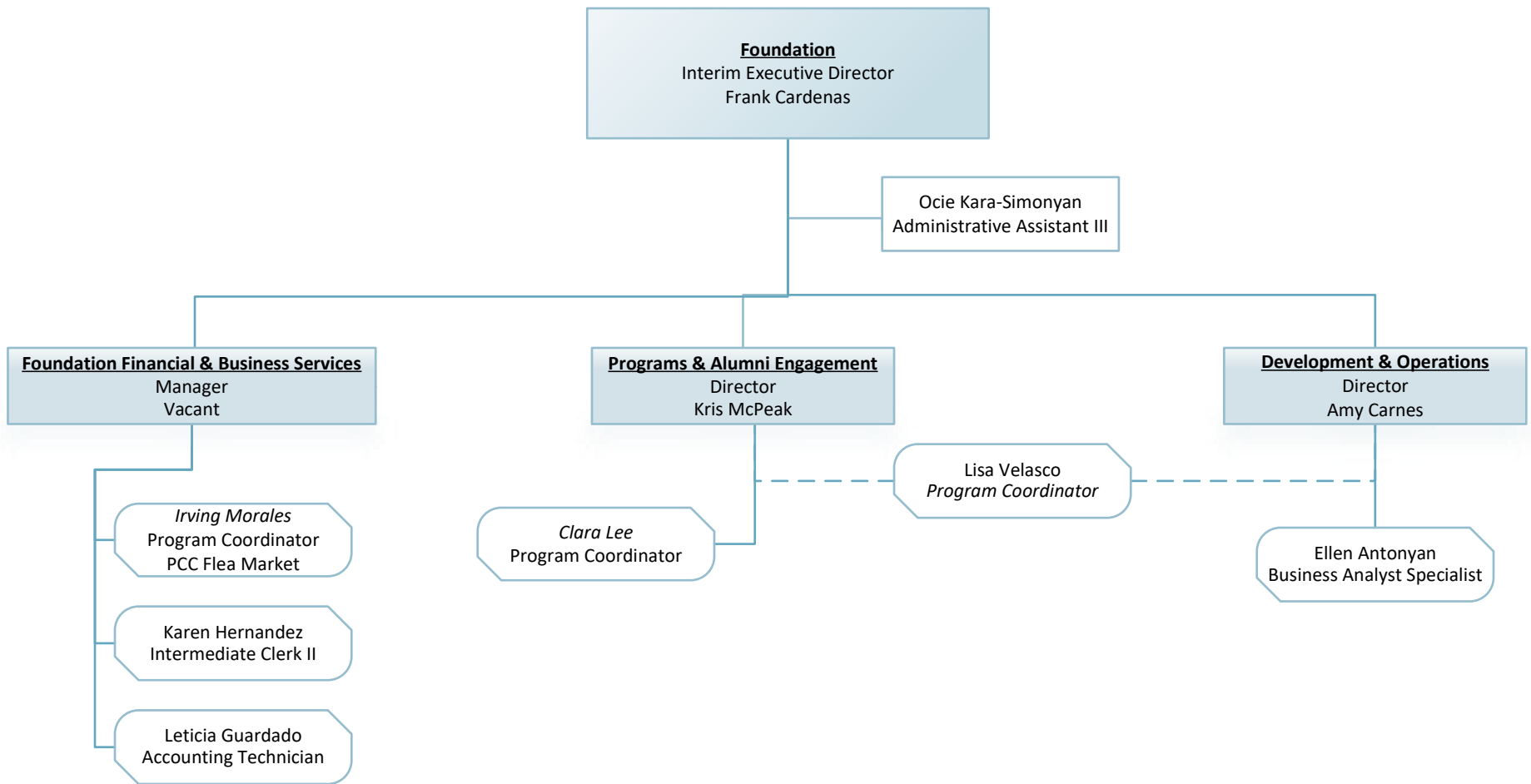




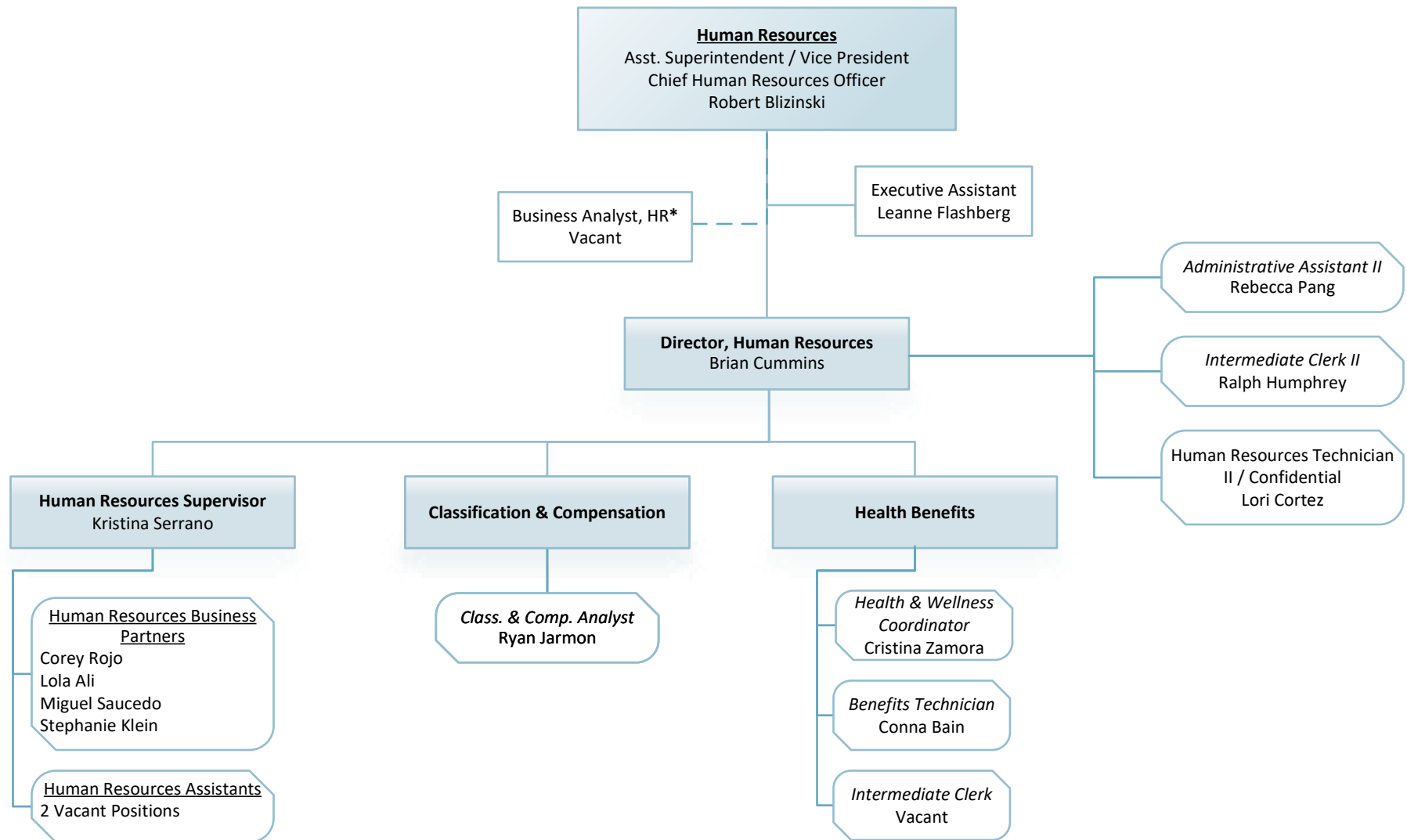




Economic and Workforce Development



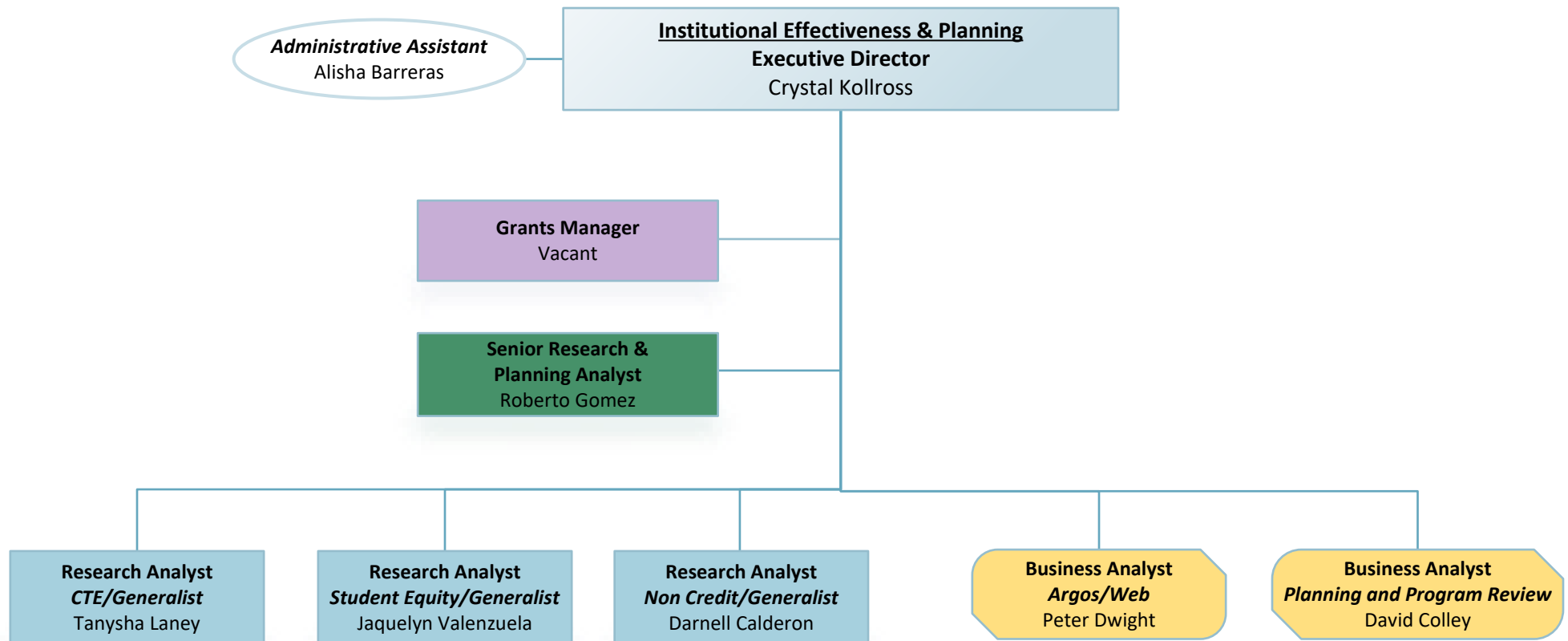
Foundation



Human Resources

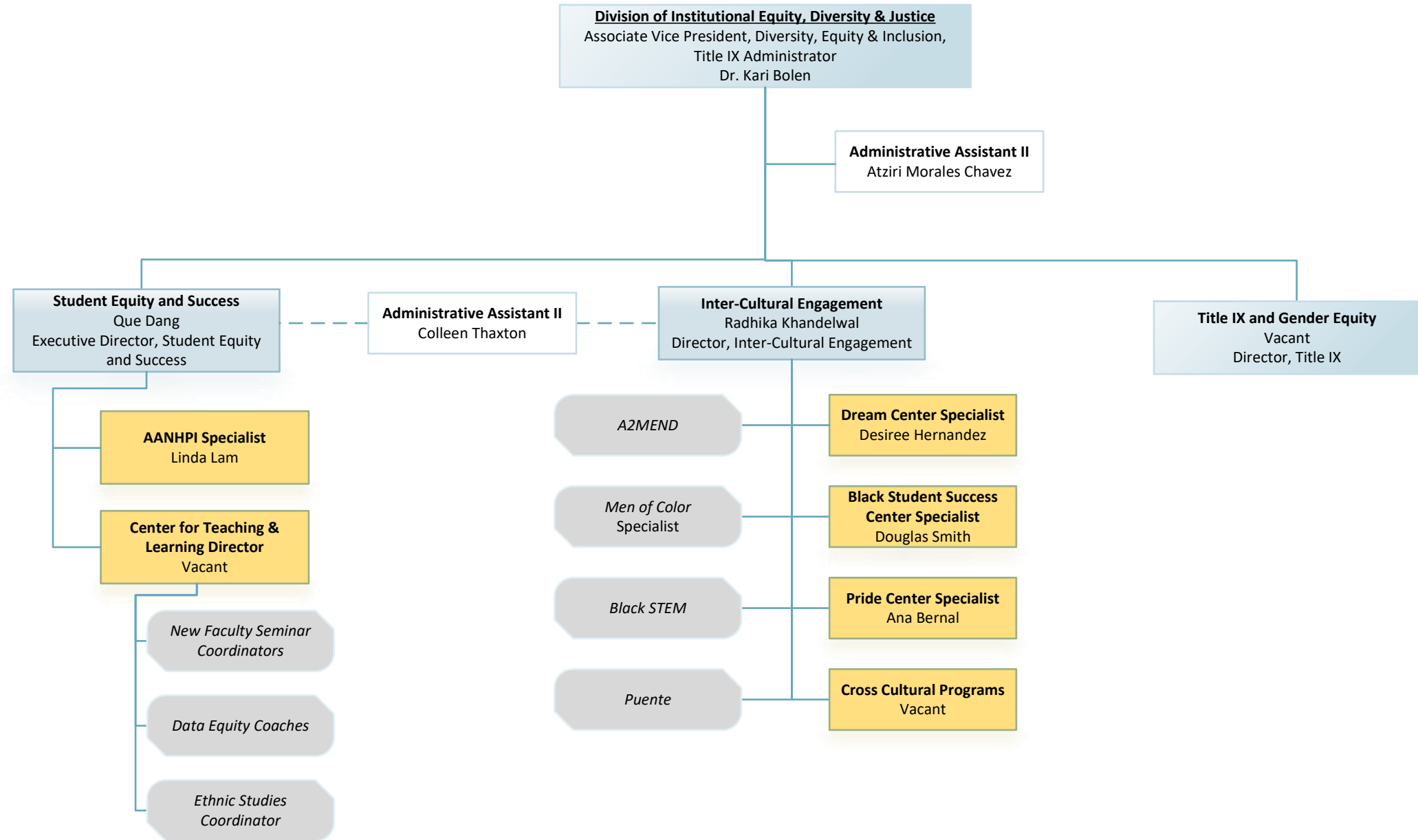


* Employee reports to HR & ITS

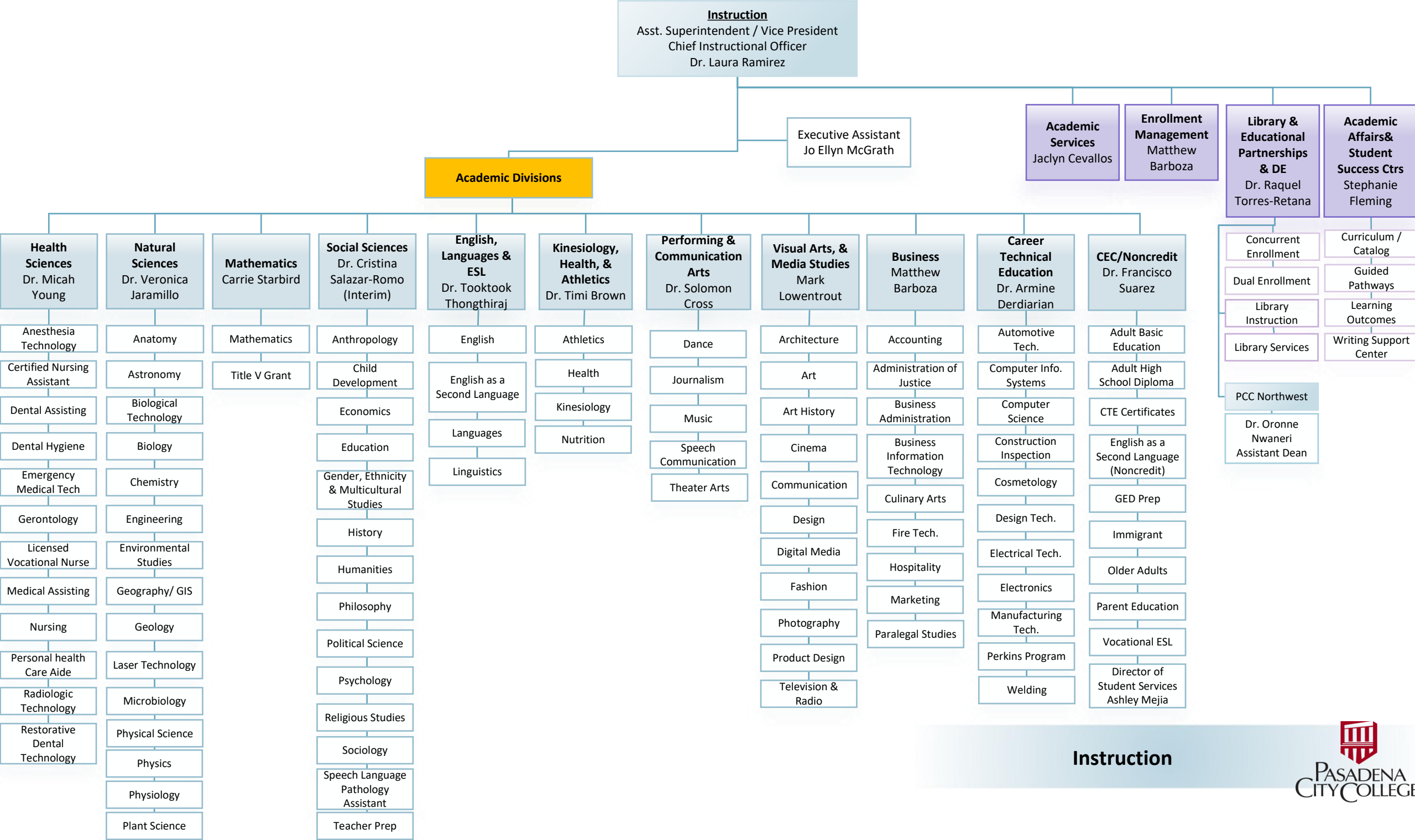


Institutional Effectiveness & Planning



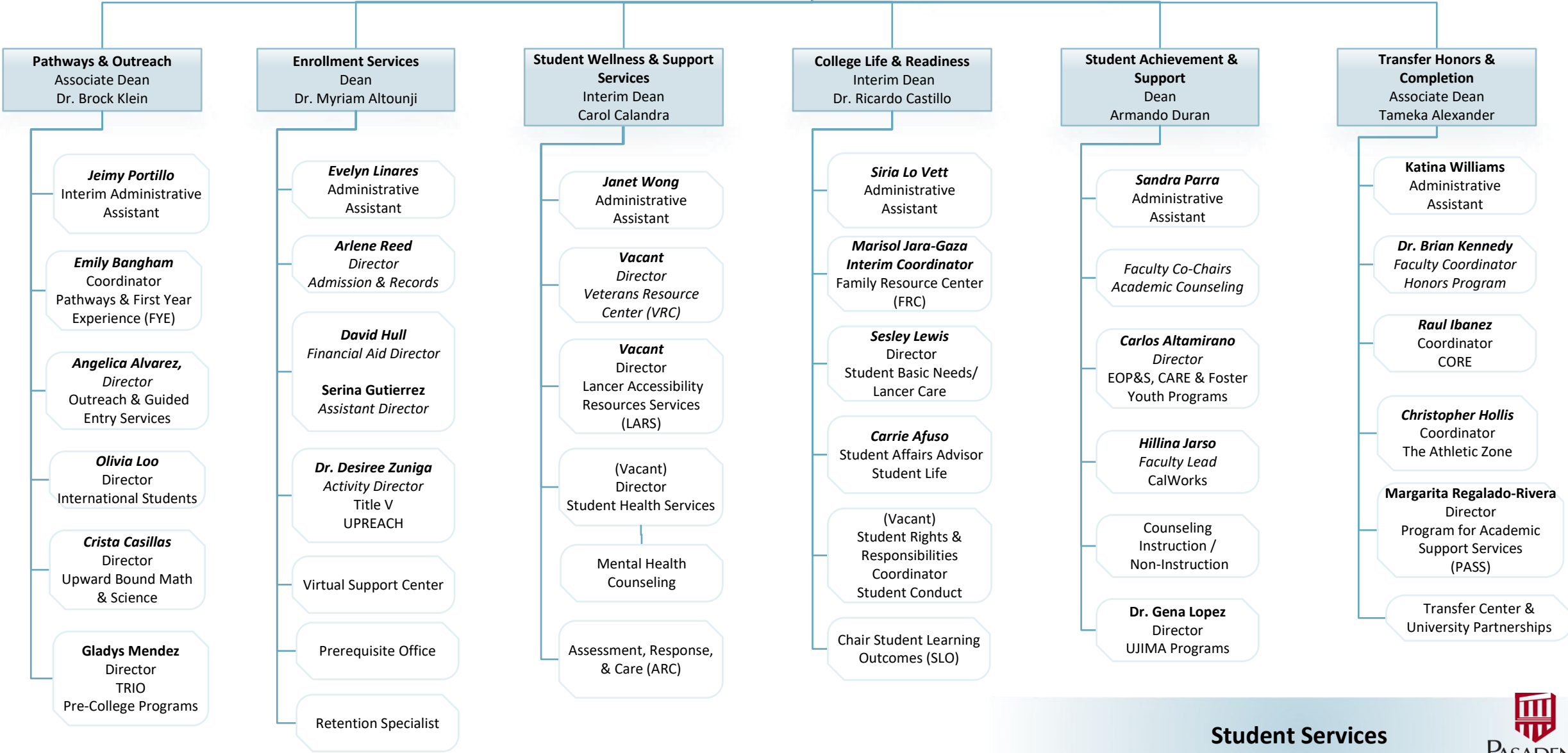


Division of Institutional Equity & Justice



Student Services
Interim Asst. Superintendent / Vice President
Chief Student Services Officer
Armando Duran

Executive Assistant
Cheryl Storms



Student Services

