



PASADENA
CITY COLLEGE

John A. Sexson Auditorium Specifications

Revised 08/16/2017

**Pasadena City College
Building C, Room 230
1570 East Colorado Blvd.
Pasadena, California 91106
(626) 585-7276 (626) 585-7260 (626) 585-7045**

Seating Capacity 1,964 (Main floor 1,422, Balcony 522)
Standard block seating individually numbered

Stage Dimensions:

Proscenium Height: (Maximum from deck floor):	22 feet
Proscenium Height: Deck to front valance drape:	21 feet
Proscenium Width: (Maximum):	41 feet, 3 inches
Proscenium Width (w/ main drape opened):	30 feet, 3 inches
Proscenium Wall Thickness:	3 feet, 2 inches
Stage Depth, Plaster line to rear wall:	33 feet
Stage Depth, Plaster line to Final Drape:	28 feet
Stage Apron width:	8 feet, 6 inches
Stage Right Wing, Arch to Loading Rail:	21 feet
Stage Left Wing, Arch to Wall:	11 feet
Grid height above Deck:	50 feet
Batten Height (Maximum) from Deck:	47 feet
Batten Height (Minimum) from Deck	4 feet
Visual height, Front Seat to Center Stage:	16 feet
Stage Floor Height from House Floor:	3 feet, 9 inches
Front of Stage to 1 st row of Seats (Center):	16 feet

Stage floor is Douglass Fir covered by 1/4" Masonite sheets painted black. Stage is located 16' feet above street level and is accessible by stairs, non-ADA exterior ramp, and/or a series of 1-ton hoists. Shop door dimensions are 4 feet wide by 9 feet high.

Rigging, Draperies, and Masking Specifications

Fly System:

28 line, single purchase standard counterweight, cable track system.

Dedicated Lines:

Line 1: Main Curtain- Red traveler, 6 feet upstage of apron front
Line 2: First Electric batten- 35 foot long, double tiered batten
Line 4: Front Video Projection Screen- 13' x 17' (Can be moved)
Line 6: Front Projection 35mm Movie Screen- 20' x 40'
Line 9: Light Ladder A (Stage Right)
Line 11: Second Electric batten- 40 foot long, double tiered batten
Line 20: Light Ladder B (Stage Left)
Line 21: Third Electric batten- 40 foot long, double tiered batten
Line 28: Storage

Drapery Lines:

Line 5: Black Legs
Line 8: Border
Line 10: Black Legs
Line 15: Black Traveler
Line 18: Border
Line 19: Black Traveler
Line 25: Border
Line 26: Sky Drop (day blue, seamless)
Line 27: Side Tabs

Travelers are 22 oz. black velour, *Legs* are 22 oz. black velour, *Borders* are black Duvetyn.

Line Set Dimensions (From Plaster Line):

Line 1	1'-6"	
Line 2	3'-5"	1 st Electric
Line 3	4'-7"	
Line 4	5'-7"	
Line 5	6'-6"	
Line 6	7'-4"	
Line 7	8'-5"	
Line 8	9'-6"	
Line 9	26'-0"	SR of CS (SR Ladder)
Line 10	11'-0"	
Line 11	12'-4"	2 nd Electric
Line 12	13'-10"	
Line 13	14'-10"	
Line 14	15'-6"	
Line 15	16'-5"	
Line 16	17'-8"	
Line 17	18'-9"	
Line 18	19'-10"	
Line 19	21'-0"	
Line 20	26'-0"	SL of CS (SR Ladder)
Line 21	22'-2"	3 rd Electric
Line 22	24'-0"	
Line 23	24'-9"	
Line 24	25'-7"	
Line 25	26'-5"	
Line 26	26'-10"	

Lighting Specifications

Lighting Control:

ETC EOS Ti 4K Control Console.

ETC 2x20 Fader Wing.

Lighting console is located in center balcony at rear wall next to audio console.

4,096 outputs, 16,000 control channels.

999 Submasters, 10,000 Cues.

Sexson system has 5 Universes of DMX512, one on each electric plus ladders

ETC Net3 ports located stage left and right wings.

Wired ETC Remote Focus Unit (located at stage right with duplicate monitor displays).

ETC iPad app control available.

Dimmers

180 ETC 2.4kw 120v Sensor Dimmers (Dimmers No.: 1-180)

12 ETC 2.4kw 120v Relay Circuits (Relay circuits No.: 181-192)

6 ETC 12kw 120v Sensor House Light Dimmers (Dimmers 193-198)

Maximum AC Electrical Power: 800 amps @ 208vac, 3Ø

Lighting Positions:

Front of House:

Motorized 12" Box Truss, length of 50' feet

Maximum Height over house floor: 30 feet

Maximum Height over stage floor: 26 feet, 4 inches

Distance from Stage (ground level): 14 feet

Distance from Stage (Max. Height): 18 feet

(Approx. angle: 60 degrees)

36 total dimmers

6 relay circuits (dedicated to moving lights + scrollers)

Dimmer numbers: 1-36 (HL to HR)

Relay circuit numbers: 181-186

NOTE: Dimmers 3, 12, 25, 34 are shared with balcony location.

Balcony Rail:

4 Free mounted positions attached to balcony face

80 feet from apron, 12 feet above house floor

6 total circuits

Dimmer numbers: 3, 12, 25, 34 (shared with FOH truss)

37, 38 (independent)

Box Booms

Vertical Wall mounted pipes both House Left and Right

12 feet to 25 feet, bottom to top

3 permanent horizontal pipes

Dimmers 39-41 (House Right) 42-44 (House Left)

Stage:

3 Dedicated Electrics

1st Electric 36 Dimmers: No.: 45-80

2nd Electric 24 Dimmers: No.: 81-104

3rd Electric 36 Dimmers: No.: 105-140

Each Electric has two 120v relay circuits located in the center of the pipe

SR + SL Wing Ladders

Two-tiered pipe attached to fly system

Each ladder has 3 fixed dimmers and 6 detachable drop dimmers

SR Ladder	Dimmer No.: 156-158 fixed
	Dimmer No.: 147-152 dropped
SL Ladder	Dimmer No.: 162-164 fixed
	Dimmer No.: 141-146 dropped

2 Vertical Fixed Wall Mounted Wing Pipes

8 feet to 16 Feet with 3- 2 foot horizontal pipes

3 Circuits Each

SR Wing	3 Dimmers No.: 153-155
SL Wing	3 Dimmers No.: 159-161

Floor Pockets

5 Floor pockets

2 Stage Right	3 Dimmers No.: 165-167
2 Stage Left	3 Dimmers No.: 167-170
1 Upstage Center	4 Dimmers No.: 171-174

Notes:

- All electrics and wing ladder positions are counterweighted and attached to a manual fly system.
- Dimmer circuits are 20-amp, 2.4kw, 120-VAC, 3-pin stage connectors.
- Relay circuits are 20-amp, 2.4kw, 120-VAC, PBG Edison connectors.
- Floor pockets also are equipped with 20-amp, 120vac PBG Edison receptacles.
- DMX connections to FOH truss, stage electrics, down stage left and right walls.
- ETC Net3 links on down stage left and right walls.
- Chroma-Q color scrollers: 6 on the FOH truss, 4 each of the 2nd and 3rd Electrics as backlight.

Sexson has a standard "Repertory" light plot hung for all events. Any changes to the standard lighting plot will result in a restore charge being passed on to the client.

The house light plot is available as a Vector Works file.

Miscellaneous:

Two Ultratec Radiance water based hazer units mounted on SR/SL Ladders with DMX control.

One Martin Magnum Pro 2000 smoke machine.

Wide variety of jumper cable lengths (2 feet to 150 feet) in either stage pin or PBG.

Edison PBG connectors and stage pin adapters.

Two Tree bases w/ pipes (12 feet).

Auxiliary Power:

400 amp, 208vac, 3Ø company switch located SR wing with *Cam-Lok* connectors.

Cables, connectors, and spider boxes are not provided.

Instrument Inventory:

Conventional:

Quantity	Type	Size	Wattage	Manufacturer
18	Fresnel	6"	1000w	Colortran 213-515
72	Ellipsoidal	33 @ 525w / 39 @ 750w		ETC Source 4
	consisting of:	8 @ 19° lenses		
		18 @ 26° lenses		
		41 @ 36° lenses		
		16 @ 50° lenses		
		2 @ 70° lenses		
11	Scoop	14"	500w	Century
8	HX PAR	6" MFL	525w	HX-PAR
12	PAR 64	8" WFL	1000w	Strand/Century
6	Far Cycs	12"/3 series	1000w	Mole-Richardson
2	Blacklight	12"	HID Hg	

Moving Lights/Scrollers:

Quantity	Type	Channels	Wattage	Manufacturer
3	Studio Spot	24 ch	575w HMI	High End
2	Technobeams	16 ch	525w HMI	High End
14	Scrollers	16 color gel string		Chroma-Q

Followspots:

Two 2.5K Gladiator II Xenon (5600°K) with 6 color filters and 1 color correction.
 Located at rear of balcony, House Left and House Right, 180 feet from stage apron.

Notes

- All Fresnel's have 4-way barn doors
- Chroma-Q Color Scrollers with Rosco gel strings are located at:
 - 6 on FOH truss
 - 4 on 2nd Electric (Backlight)
 - 4 on 3rd Electric (Backlight)
- Two GAM Twin Spin gobo holders
- All instruments have gel frames and stage pin connectors

Audio Specifications

Sound

The built-in FOH mix position is located in the center balcony behind the last row of seats approximately 150' feet from the stage apron. The main floor seating areas can be used for a touring FOH mix location (dependent on seating requirements and audio snake lengths).

FOH equipment

- (1) Avid Profile Rack Digital Mix System, 48 channels, 8 stereo returns, 8 groups, 24 aux sends, 8 output Matrix, Left, Right & Mono busses, 4 Band EQ, 8 VCA's.
- (1) Yamaha SPX990 effects processor
- (1) TC Electronics M-One XL effects processor
- (1) dbx 166XL 2-channel compressor/limiter/gate
- (2) dbx 160A compressor/limiter
- (1) Tascam SS-R200 Solid State Recorder
- (2) Denon DN-C635 CD players
- (1) EAW UX-8800 System speaker processor
- (8) Shure ULX-D digital wireless receivers
- (4) Shure SLX wireless receivers
- (1) Crown D45 amplifier
- (5) Bittree TT style audio patchbays
- (54) mic lines from stage (16 SR, 16 USC, 16 SL, 6 DSC)
- (4) grid mic line lines + 2 AP mic lines
- (12) return lines to stage right
- Video audio line-level feeds located at balcony rail and orchestra apron.
- All Profile inputs and outputs including inserts are wired to FOH patchbays

Speaker Configuration

Stereo left and right mains flown at front of proscenium with under balcony fill system.

- Left and right mains consist of (8) EAW KF-650e 3-way tri-amped and (4) EAW SB600e subwoofers permanently flown in a 2 wide x 3 high configuration per side.
- EAW KF-650e's are powered by Lab Gruppen and Crown iTech amplifiers.
- EAW SB-650e's are powered by Crown iTech 8000 amplifiers.
- EAW UX-8800 speaker system processing located at FOH.
- Additional subs consist of (2) JBL SR-4719A located at floor level in front of the stage powered by a QSC PL6.0 amplifier.
- Hang points for additional speakers are not available.

A under balcony fill system consists of (4) EAW UB22i speakers, powered by Crown amps, equalized by Rane EQ and delayed by RANE AD 22B delay unit.

Monitor equipment

Monitors are mixed from the FOH console unless prior arrangements are made. A Midas Legend 3000 console is available with 40 channels and 12 mix sends. 12 line returns to stage right. Audio power is 120/220 VAC single phase 200 amp service, located stage right with Edison PGB connectors. Monitor amp rack containing equalizers and amps is located stage right.

- (10) JBL SRX-700 monitor speakers, passive 2-way
- (2) JBL SR-4704A monitor speakers, passive 2-way
- (2) JBL MS-112 Marquis monitor speakers, passive 2-way
- (2) JBL SR-4735A side fill monitor speakers, passive 3-way
- (4) EV SX-200 speakers, passive 2-way
- (8) Galaxy Audio Hotspot speakers
- (1) Whirlwind 24-channel transformer splitter, XLR in and out
- (3) Rane ME30 stereo 1/3 octave graphic equalizers
- (2) QSC Powerlight PL3.4 stereo amplifiers
- (1) QSC EX4000 stereo amplifier

Microphones

- (16) Shure SM-58
- (7) Shure SM-57
- (4) Shure Beta-58
- (3) Shure Beta-87A
- (3) Shure SM-78
- (2) Shure 545 w/switch
- (2) Shure 545
- (2) Shure SM-11
- (1) Shure MX393
- (4) AKG C-451-E
- (2) AKG C-452-EB
- (2) AKG D112
- (2) AKG C-414-B-ULS
- (1) AKG C-418
- (6) Neumann KM-84
- (4) Neumann KM-184
- (3) Sennheiser MD-421
- (1) Sennheiser MKE-2, wired
- (2) Sennheiser K3-U
- (3) Sony ECM-50PS
- (1) Sony ECM-16
- (7) Crown PCC-160
- (2) Crown PZM-30-PGM
- (3) Crown CM-30
- (2) Audio-Technica AT-857
- (1) Barcus Berry 4000XL
- (8) Shure ULX-D series wireless systems with: (8) Beta-87A's, (8) UC1-UB bodypacks and (4) Sennheiser MKE-2 and (4) Countryman B3 lavalier mics.
- (4) Shure SLX series wireless systems with (4) Beta-58 handhelds.

(Audio continued)

- Frequencies for wireless units available upon request.
- (6) Whirlwind Director DI Boxes
- (3) Whirlwind IMP-2 DI boxes
- (2) Whirlwind PCDI DI box
- (1) Stewart active DI box
- (16) AKG combo boom stands
- (8) AKG short combo boom stands
- (6) AKG boom arms
- Assortment of standard mic stands with round bases

Communications

Sexson uses a RTS TW 2-channel for intercom. (14) single muff & (4) double muff Beyer DT108 headsets with (18) RTS belt-packs. Building is hardwired with RTS hookups at all appropriate technical locations.

Backstage Paging + Video System

The facility is equipped with backstage and dressing rooms video monitors using a fixed locked off security type camera located at the balcony rail. The paging system feeds both dressing rooms with the mic located stage right at the stage managers desk.

Video Specifications

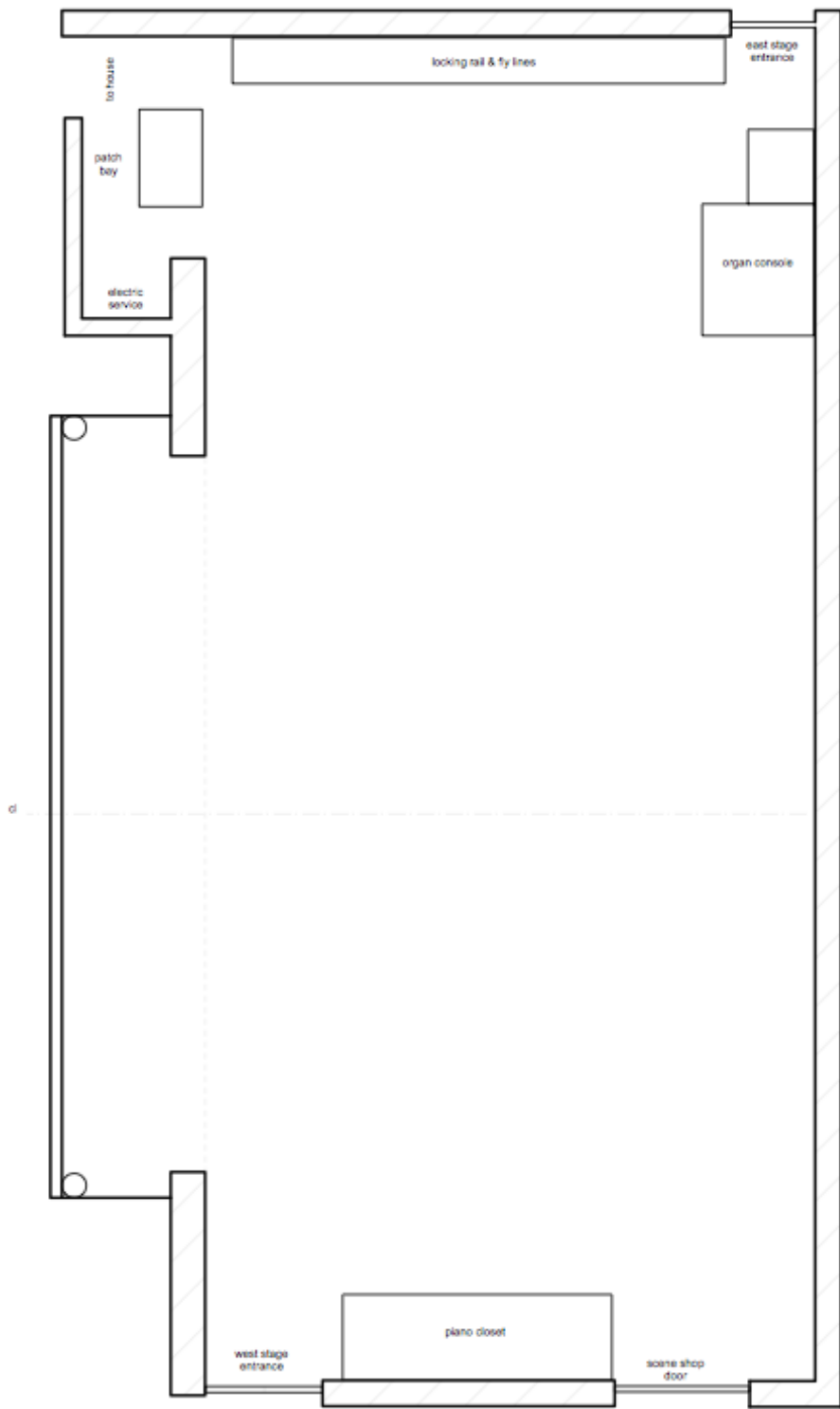
Front projection of video and computer graphic presentations.

- 35mm 20'x40' front projection screen (line 6).
- 13'x17' Dalite high-gain front projection screen (Line 4).
- Sanyo PLC-XF42 front projector. 9000 lumens, XGA resolution, 4:3 aspect ratio.
- DVD playback and control from FOH.
- Laptop VGA connections from stage right and/or FOH in balcony.

Dressing Rooms

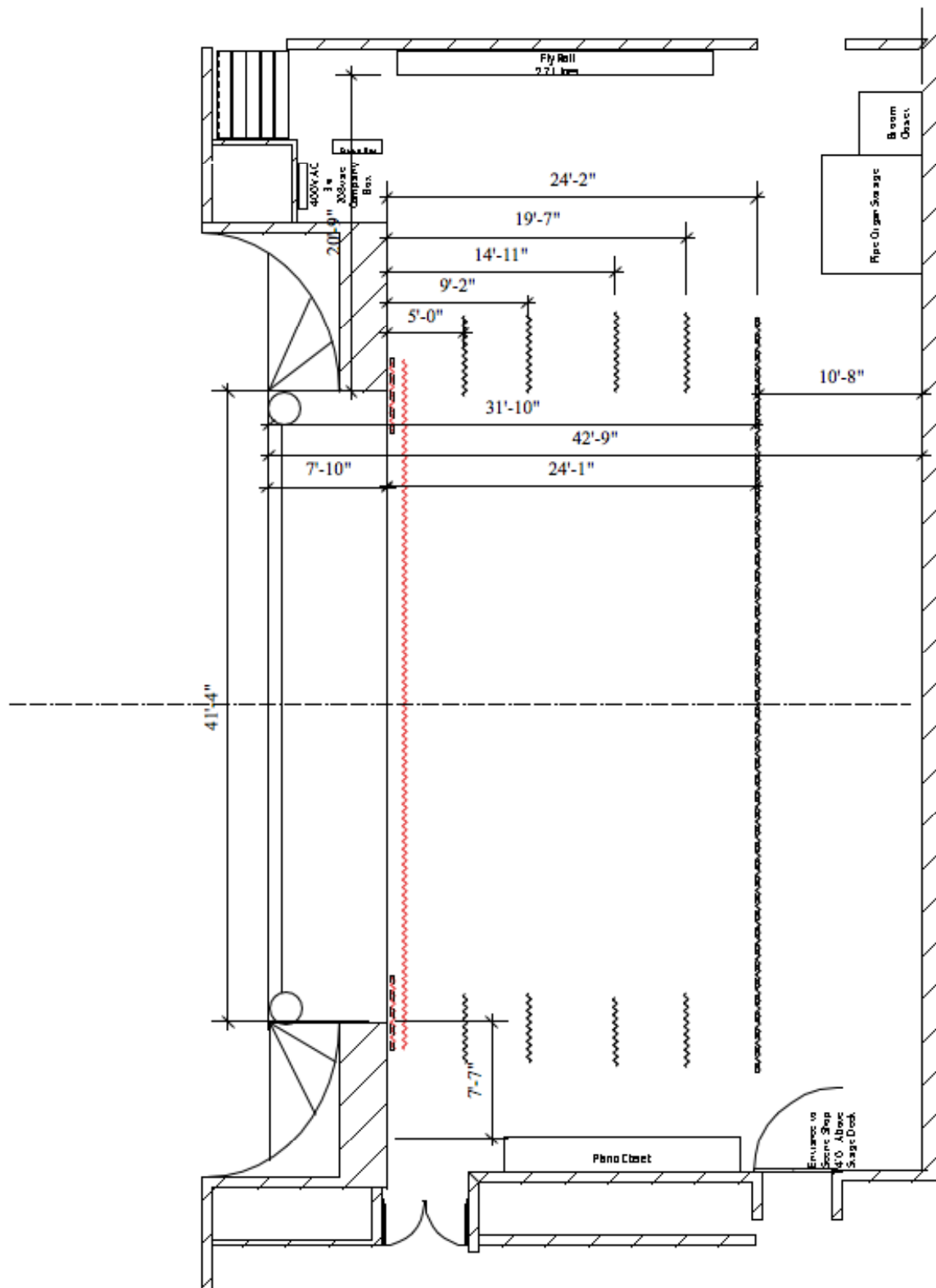
- Two separate rooms, Stage Left and Stage Right located under main stage.
- Chorus type dressing rooms with single restroom.
- Makeup mirrors with incandescent lights.
- Video monitor with audio program feed.
- No Showers.
- No connecting access or under stage crossover.

- **Smoking is not permitted on the campus of Pasadena City College or in Sexson Auditorium.**
- **Pasadena City College is a smoke-free campus.**
- **Alcoholic beverages are strictly prohibited.**

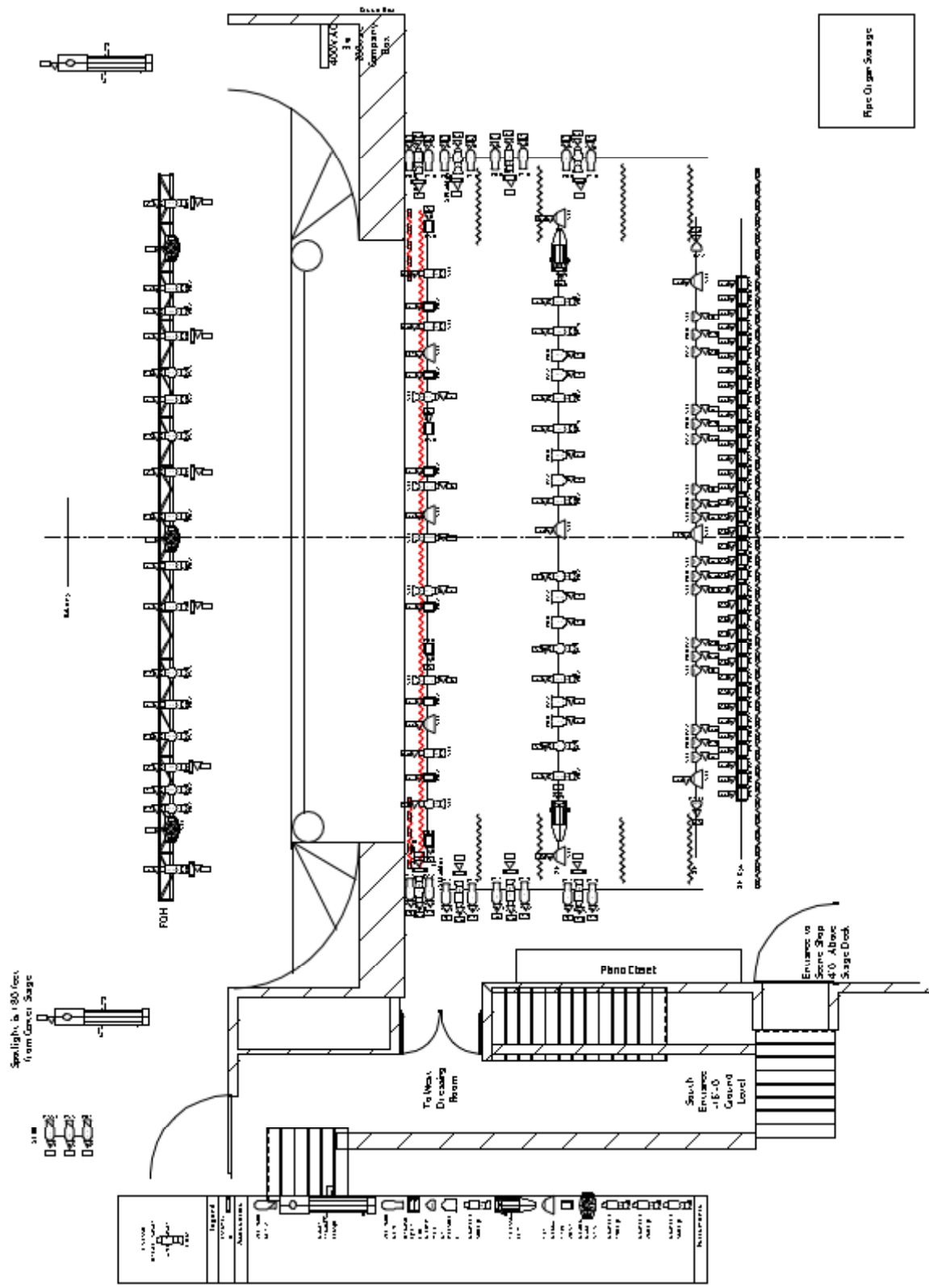


Sexson Auditorium Basic Floor Plan

No Scale

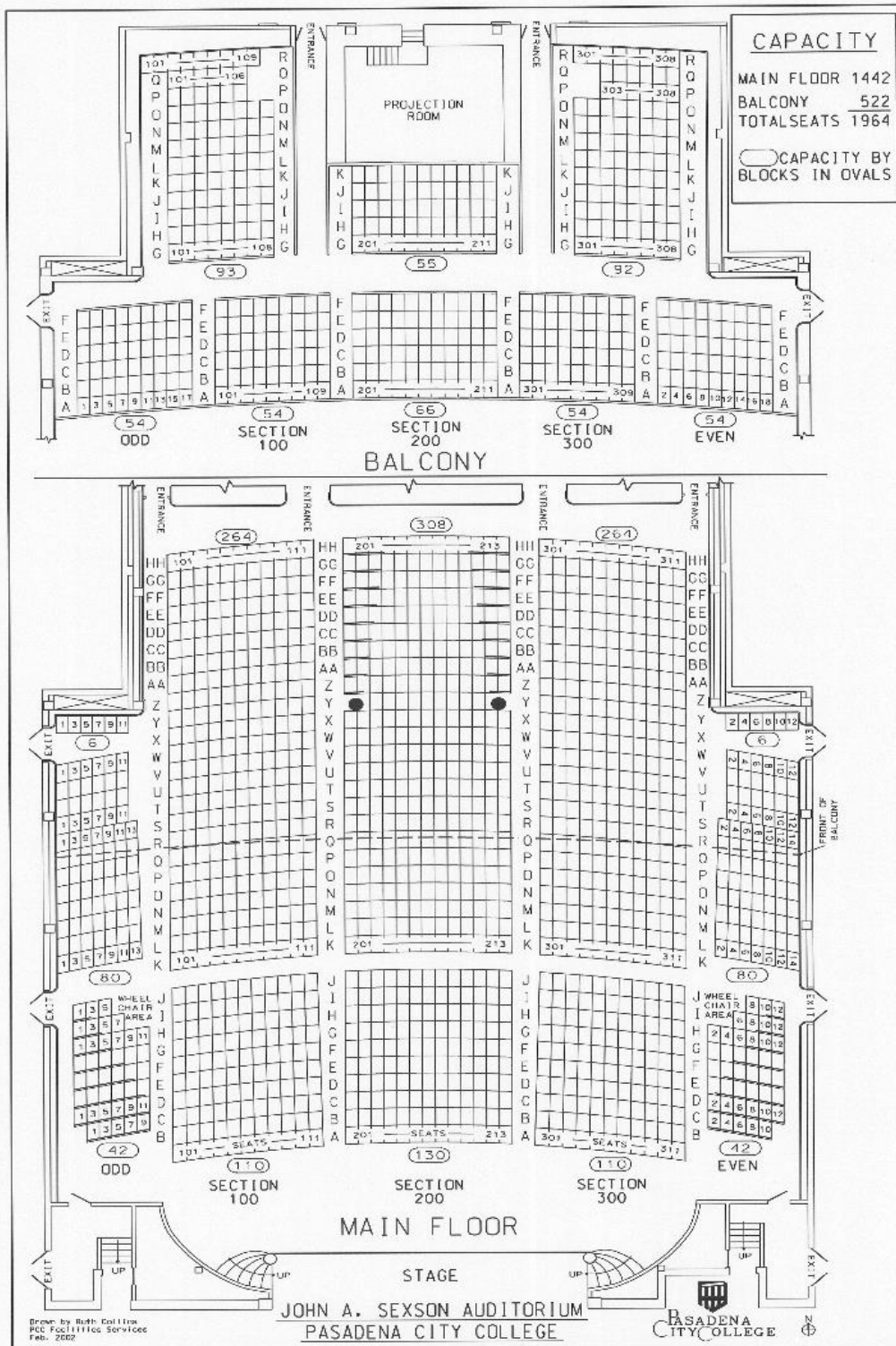


Sexson Stage Measurements



No Scale

Sexson Auditorium House Light Plot



Sexson Auditorium Seating Chart