

Responding to Federal Immigration Officials on Campus

Recent developments have brought increased attention to the challenges that immigration enforcement proceedings may present for our undocumented students and their families. Pasadena City College is committed to fostering a welcoming and supportive environment for all members of our community. The following guidelines are intended to help faculty, staff, and visitors understand how to respond if questions or concerns arise about the presence of immigration officials on campus.

IF

a federal immigration official requests access to: a **District Facility, District Records, or Student Information**; or if you have concerns about the presence of a federal immigration official on campus:

THEN

1

STAY CALM

Don't cause panic.

Rumors or false information about enforcement actions on campus can spread anxiety and panic. Instead of assuming the worst, take charge and follow these steps to ensure the best outcome.

2

REQUEST

the official's:

- ☒ Name
- ☒ Identification Number
- ☒ Agency Affiliation
- ☒ Make a written note of this info

3

ASK

for a copy of any **warrant** or **court order** they may have.

5

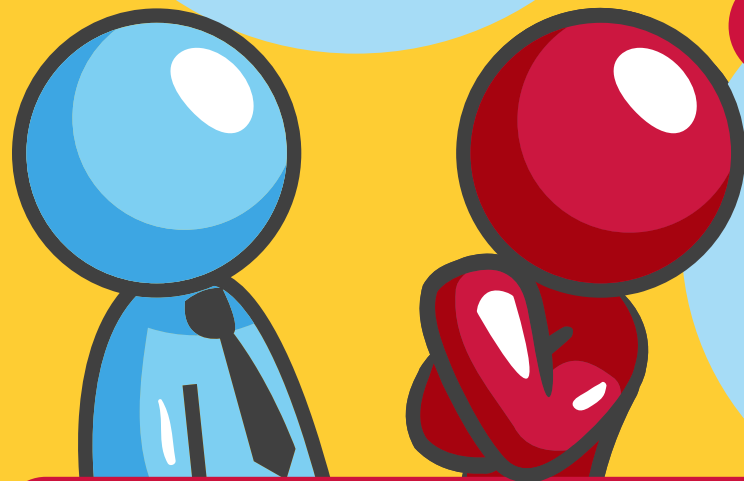
CONTACT

Campus Police at **626-585-7484**. Campus Police will log the interaction and immediately engage the Superintendent/President and legal counsel to resolve the situation.

4

INFORM

the officer you are not impeding the agency's process but need to refer them to the Superintendent-President's Office for advice and assistance.



Frequently Asked Questions

Can I release student information to a law enforcement official?

Not without student's prior written consent or official district permission from the Superintendent-President's office. The release of student information is governed by the Family Educational Rights and Privacy Act ("FERPA"), which provides key privacy and security protections for our students' data.

Will PCC Campus Police enforce federal immigration laws?

District Police & College Safety will neither contact, detain, question, or arrest any individual on the sole basis of suspected undocumented status nor work in concert with federal immigration officials for immigration enforcement purposes.

Can enforcement officials access all areas of campus without asking permission?

No. While PCC is a public college, and the areas on campus that are open to the public are also open to law enforcement officials, limited access areas – such as locked offices, classrooms, or areas marked "authorized personnel – are off limits without official district permission.

Do international students follow different rules?

While PCC is obligated to provide certain information to federal agencies regarding its international student population, the above protocol applies to resident and international students alike.

Contact Info

Campus Police

626-585-7484
police@pasadena.edu

Office of the Superintendent/President

626-585-7201
pccprez@pasadena.edu

1570 E. Colorado Blvd
Pasadena, CA 91106

